

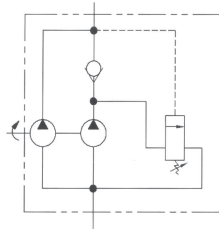
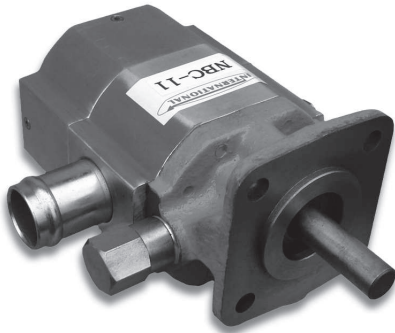
IFP 2-STAGE PUMPS

FASTER CYCLE TIME, WITH LESS HORSEPOWER
EXCELLENT LOGSPLITTER PUMPS

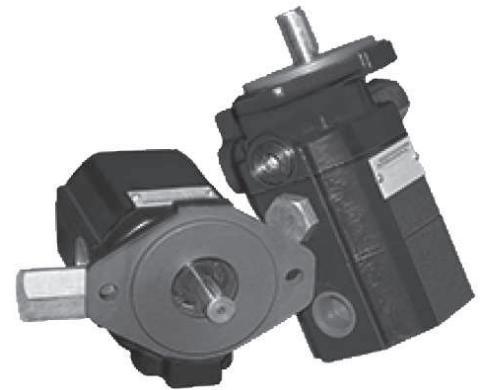


8, 11, 16, 22, 28 GPM Models (at 3600 RPM)
Interchange w/ Haldex/Barnes, Viking, MTE
400 - 3600 RPM, 3000 PSI Max.
Integral Unloading, Check Valves

- LOGSPLITTERS
- PRESSES
- COMPACTORS

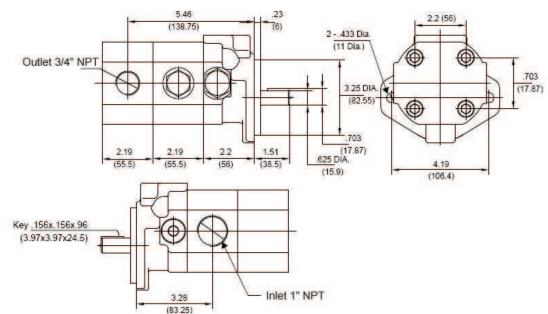
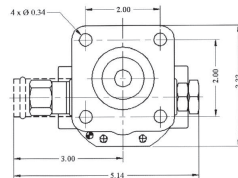
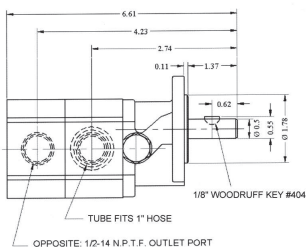


See pages 20, 21
for logsplitter valves



NBC-8, 11, 16
Compact, Lightweight
Aluminum Body, Iron Front Cover
Standard 4-Bolt Mount
1/2" Shaft, 1/8" Key, CW Rotation

NBC-22, 28
Compact, Powerful
Heavy cast iron body
Standard 2-Bolt "A" Mount
5/8" Shaft, 5/32" Key, CW Rotation



PART NO	GPM*	GAS HP	DISPLACENT	INLET	OUTLET	WT
NBC-08	8	5	.13/.38	1" Tube	1/2 NPT	5.5
NBC-11	11	6	.22/.54	1" Tube	1/2 NPT	5.5
NBC-16	16	8	.26/.79	1" Tube	1/2 NPT	5.5
NBC-SKT	Seal kit - fits 8, 11, 16 pumps					0.5
NBC-22	22	12	.47/.93	1" NPT*	3/4 NPT	22
NBC-28	28	16	.47/1.4	1" NPT*	3/4 NPT	23

*GPM @3600 RPM

*use 1 1/4" suction line,
BHEPS4X5 hose barb

ORDERS PHONE (585)328-0670 24 Hr Fax (585)328-0675

