

SPECIFICATION DATA

DISTRIBUTION TYPE		YMSY 80	YMSY 100	YMSY 125	YMSY 160	YMSY 200	YMSY 250	YMSY 315	YMSY 400	YMSY 475	
GEOMETRIC DISPLACEMENT	[in ³ /rev.]	[4.92]	[6.15]	[7.63]	[9.40]	[11.84]	[14.83]	[18.97]	[24.04]	[28.98]	
	cm ³ /rev.	80.6	100.8	125	154	194	243	311	394	475	
MAX. SPEED RPM	RATED	675	540	432	337	270	216	171	135	110	
	CONT.	800	748	600	470	375	300	240	185	155	
	INT.	988	900	720	560	450	360	280	225	185	
MAX. TORQUE [LB. IN.] N*M	RATED	[LB. IN.]	[1548]	[1946]	[2414]	[3936]	[4466]	[5483]	[6191]	[6766]	[6898]
		N*M	175	220	273	445	505	620	700	765	780
	CONT.	[LB. IN.]	[1990]	[2565]	[3228]	[4289]	[5183]	[6262]	[7783]	[7783]	[8048]
		N*M	225	290	365	485	586	708	880	880	910
	INT.	[LB. IN.]	[2211]	[2830]	[3538]	[4776]	[5704]	[7128]	[8490]	[8490]	[8490]
		N*M	250	320	400	540	645	806	960	960	960
MAX. OUTPUT [HP] KW	RATED	[HP]	[16]	[17]	[17]	[17]	[17]	[17]	[15]	[13]	[12]
		KW	12	12.4	12.4	12.4	12.4	12.4	11.2	9.6	8.6
	CONT.	[HP]	[21]	[24]	[24]	[24]	[24]	[24]	[23]	[15]	[12]
		KW	16	18	18	18.1	18.1	18	17	11	9
	INT.	[HP]	[27]	[29]	[31]	[34]	[32]	[32]	[27]	[16]	[15]
		KW	20	22	23	25	24	23.8	20.2	12	11
MAX. PRES- SURE DROP [PSI] MPa	RATED	[PSI]	[2320]	[2320]	[2320]	[2755]	[2755]	[2610]	[2320]	[2030]	[1740]
		MPa	16	16	16	19	19	18	16	14	12
	CONT.	[PSI]	[2913]	[2913]	[2913]	[3045]	[3045]	[2900]	[2900]	[2320]	[2030]
		MPa	20.5	20.5	20.5	21	21	20	20	16	14
	INT.	[PSI]	[3263]	[3263]	[3263]	[3263]	[3263]	[3263]	[3263]	[2538]	[2175]
		MPa	22.5	22.5	22.5	22.5	22.5	22.5	22.5	17.5	15
PEAK	[PSI]	[4278]	[4278]	[4278]	[3263]	[3263]	[3263]	[3263]	[2900]	[2538]	
	MPa	29.5	29.5	29.5	22.5	22.5	22.5	22.5	20	17.5	
MAX. FLOW [GPM] L/MIN	CONT.	[GPM]	[17.17]	[19.8]	[19.8]	[19.8]	[19.8]	[19.8]	[19.8]	[19.8]	[19.8]
		L/MIN	65	75	75	75	75	75	75	75	75
	INT.	[GPM]	[21.14]	[23.7]	[23.7]	[23.7]	[23.7]	[23.7]	[23.7]	[23.7]	[23.7]
		L/MIN	80	90	90	90	90	90	90	90	90
MAX. INLET PRESSURE [PSI] MPa	RATED	[PSI]	[3045]	[3045]	[3045]	[3045]	[3045]	[3045]	[3045]	[3045]	[3045]
		MPa	21	21	21	21	21	21	21	21	21
	CONT.	[PSI]	[3625]	[3625]	[3625]	[3625]	[3625]	[3625]	[3625]	[3625]	[3625]
		MPa	25	25	25	25	25	25	25	25	25
	INT.	[PSI]	[4350]	[4350]	[4350]	[4350]	[4350]	[4350]	[4350]	[4350]	[4350]
		MPa	30	30	30	30	30	30	30	30	30
WEIGHT [LB] KG	[LB]	[22]	[22.4]	[23]	[24]	[24]	[26]	[27]	[29]	[31]	
	KG	9.8	10	10.3	10.7	11.1	11.6	12.3	13.2	14.3	

- Rated speed and rated torque: Output value of speed and torque under rated flow and rated pressure.
- Continuous pressure: Max. value of operating motor continuously.
- Intermittent pressure: Max. value of operating motor in 6 seconds per minute.
- Peak pressure: Max. value of operating motor in 0.6 second per minute.

YMSY

PERFORMANCE DATA

YMSY 80 [4.92 in³/rev] 80.6 cm³/rev.

		[508]	[1015]	[1523]	[2030]	[2538]	[3045]	[3263]	[PSI]
		3.5	7	10.5	14	17.5	20.5	22.5	MPa
GPM	[3.9]	[310]	[708]	[1061]	[1397]	[1725]	[2016]	[2202]	
	L/min	35	80	120	158	195	228	249	
15		180	174	168	164	158	151	143	TORQUE (LB-IN) TORQUE (N·M) SPEED (RPM)
	[7.9]	[310]	[708]	[1061]	[1397]	[1725]	[2016]	[2202]	
30		362	352	346	338	330	322	310	
	[10.6]	[310]	[699]	[1057]	[1311]	[1707]	[2008]	[2211]	
40		487	480	468	457	446	438	425	
	[13.2]	[265]	[681]	[1035]	[1353]	[1698]	[1981]	[2193]	
50		612	603	592	581	572	558	542	
	[15.9]	[248]	[681]	[1035]	[1353]	[1698]	[1981]	[2149]	
60		735	726	718	703	687	673	646	
	[17.1.7]	[230]	[663]	[1026]	[1335]	[1663]	[1919]	[2087]	
Max cont.	65	794	786	773	760	744	722	706	Max cont.
	[21.1.9]	[212]	[637]	[964]	[1256]	[1557]	[1823]	[2009]	Max int.
Max int.	80	981	968	955	925	893	870	832	

YMSY 100 [6.15 in³/rev] 100.8 cm³/rev.

		[508]	[1015]	[1523]	[2030]	[2538]	[3045]	[3263]	[PSI]
		3.5	7	10.5	14	17.5	20.5	22.5	MPa
GPM	[3.9]	[425]	[840]	[1327]	[1769]	[2211]	[2494]	[2742]	
	L/min	48	95	150	200	250	282	310	
15		146	144	139	135	130	120	105	TORQUE (LB-IN) TORQUE (N·M) SPEED (RPM)
	[7.9]	[398]	[831]	[1291]	[1751]	[2211]	[2565]	[2804]	
30		291	289	278	274	269	258	242	
	[10.6]	[380]	[787]	[1256]	[1733]	[2193]	[2517]	[2795]	
40		387	384	374	359	350	335	320	
	[13.2]	[354]	[778]	[1194]	[1716]	[2184]	[2529]	[2786]	
50		486	483	473	462	450	430	420	
	[15.9]	[327]	[778]	[1167]	[1636]	[2158]	[2563]	[2759]	
60		588	584	574	562	550	538	520	
	[19.8]	[310]	[708]	[1150]	[1592]	[2123]	[2467]	[2742]	
Max cont.	75	740	735	720	705	696	676	653	Max cont.
	[23.8]	[245]	[663]	[1047]	[1503]	[2087]	[2397]	[2684]	Max int.
Max int.	90	850	840	810	787	770	750	747	

YMSY 125 [1.63 in³/rev] 125 cm³/rev.

		[508]	[1015]	[1523]	[2030]	[2538]	[3045]	[3263]	[PSI]
		3.5	7	10.5	14	17.5	20.5	22.5	MPa
GPM	[3.9]	[486]	[1061]	[1557]	[2167]	[2733]	[3051]	[3317]	
	L/min	55	120	176	245	309	345	375	
15		115	113	110	104	98	90	84	TORQUE (LB-IN) TORQUE (N·M) SPEED (RPM)
	[7.9]	[486]	[1061]	[1548]	[2241]	[2786]	[3219]	[3573]	
30		231	228	225	214	202	188	172	
	[10.6]	[469]	[1044]	[1574]	[2211]	[2786]	[3219]	[3564]	
40		312	309	290	289	278	262	235	
	[13.2]	[442]	[1017]	[1557]	[2193]	[2784]	[3201]	[3511]	
50		391	386	378	365	352	339	308	
	[15.9]	[398]	[999]	[1512]	[2131]	[2729]	[3166]	[3511]	
60		469	461	450	437	425	400	372	
	[19.8]	[398]	[913]	[1477]	[2123]	[2706]	[3113]	[3440]	
Max cont.	75	588	574	560	544	526	505	481	Max cont.
	[23.8]	[354]	[929]	[1433]	[2096]	[2662]	[3033]	[3343]	Max int.
Max int.	90	710	696	680	661	646	628	610	

YMSY 160 [9.4 in³/rev] 154 cm³/rev.

		[508]	[1015]	[1523]	[2030]	[2538]	[3045]	[3263]	[PSI]
		3.5	7	10.5	14	17.5	21	22.5	MPa
GPM	[3.9]	[619]	[1256]	[1901]	[2636]	[3290]	[3847]	[4210]	
	L/min	70	142	215	298	372	435	476	
15		93	91	89	85	80	76	58	TORQUE (LB-IN) TORQUE (N·M) SPEED (RPM)
	[7.9]	[646]	[1335]	[1990]	[2759]	[3378]	[4033]	[4351]	
30		189	187	181	176	170	162	153	
	[10.6]	[663]	[1344]	[2016]	[2777]	[3387]	[4015]	[4316]	
40		252	250	246	239	234	228	212	
	[13.2]	[619]	[1309]	[1990]	[2697]	[3290]	[3936]	[4245]	
50		313	310	306	298	293	285	272	
	[15.9]	[601]	[1265]	[1928]	[2618]	[3272]	[3909]	[4245]	
60		378	376	370	362	353	346	332	
	[19.8]	[548]	[1238]	[1866]	[2574]	[3228]	[3883]	[4201]	
Max cont.	75	475	469	461	450	441	432	414	Max cont.
	[23.8]	[522]	[1159]	[1786]	[2529]	[3157]	[3759]	[4068]	Max int.
Max int.	90	567	561	554	543	532	520	509	

YMSY

PERFORMANCE DATA

YMSY 200 [11.8 in³/rev] 194 cm³/rev.

		[508]	[1015]	[1523]	[2030]	[2538]	[3045]	[3263]	[PSI]
		3.5	7	10.5	14	17.5	21	22.5	MPa
GPM	[3.9]	[769]	[1583]	[2414]	[3281]	[4166]	[4970]	[5395]	
	15	87	179	273	371	471	562	610	
L/min	[7.9]	74	73	71	68	64	60	48	
	30	[805]	[1680]	[2547]	[3414]	[4325]	[5059]	[5466]	TORQUE (LB-IN)
Flow (L/min)	[7.9]	91	190	288	386	489	572	618	TORQUE (N•M)
	30	150	148	143	140	134	128	119	SPEED (RPM)
Flow (L/min)	[10.6]	[831]	[1707]	[2618]	[3485]	[4404]	[5165]	[5704]	
	40	94	193	296	394	498	584	645	
Flow (L/min)	[10.6]	198	195	192	188	183	178	167	
	40	[796]	[1689]	[2582]	[3440]	[4360]	[5130]	[5607]	
Flow (L/min)	[13.2]	90	191	292	389	493	580	634	
	50	248	246	241	236	230	223	212	
Flow (L/min)	[15.9]	[752]	[1636]	[2467]	[3378]	[4272]	[5085]	[5501]	
	60	85	185	279	382	483	575	622	
Max cont.	[15.9]	300	295	288	281	273	263	251	
	60	[690]	[1557]	[2397]	[3272]	[4174]	[4961]	[5395]	Max cont.
Max cont.	[19.8]	78	176	271	370	472	561	610	
	75	374	370	364	360	352	340	331	
Max int.	[19.8]	Max cont.							
	75	[601]	[1442]	[2344]	[3193]	[4033]	[4820]	[5298]	Max int.
Max int.	[23.8]	68	163	265	361	456	545	599	
	90	443	440	435	428	424	413	400	

YMSY 250 [14.8 in³/rev] 243 cm³/rev.

		[508]	[1015]	[1523]	[2030]	[2537]	[2900]	[3262]	[PSI]
		3.5	7	10.5	14	17.5	20	22.5	MPa
GPM	[3.9]	[773]	[2043]	[3104]	[4086]	[5174]	[6023]	[6881]	
	15	110	231	351	462	585	681	778	
L/min	[7.9]	59	58	56	53	50	46	35	
	30	[1026]	[2087]	[3175]	[4201]	[5280]	[6191]	[6987]	TORQUE (LB-IN)
Flow (L/min)	[7.9]	116	236	359	475	597	700	790	TORQUE (N•M)
	30	119	117	114	108	102	92	80	SPEED (RPM)
Flow (L/min)	[10.6]	[1044]	[2131]	[3210]	[4245]	[5298]	[6244]	[7040]	
	40	118	241	363	480	599	706	796	
Flow (L/min)	[10.6]	162	159	156	150	143	134	121	
	40	[982]	[2069]	[3113]	[4174]	[5227]	[6129]	[6969]	
Flow (L/min)	[13.2]	111	234	352	472	591	693	788	
	50	203	201	197	191	182	173	158	
Flow (L/min)	[15.9]	[937]	[1981]	[3051]	[4086]	[5147]	[6058]	[6828]	
	60	106	224	345	462	582	685	772	
Max cont.	[15.9]	244	242	237	230	220	208	194	
	60	[893]	[1893]	[3007]	[4015]	[5041]	[5925]	[6721]	Max cont.
Max cont.	[19.8]	101	214	340	454	570	670	760	
	75	303	299	294	285	272	260	244	
Max int.	[19.8]	Max cont.							
	75	[822]	[1848]	[2963]	[3953]	[4944]	[5811]	[6624]	Max int.
Max int.	[23.8]	93	209	335	447	559	657	749	
	90	363	359	354	348	340	328	303	

YMSY 315 [18.9 in³/rev] 311 cm³/rev.

		[508]	[1015]	[1522]	[2030]	[2537]	[2900]	[3262]	[PSI]
		3.5	7	10.5	14	17.5	20	22.5	MPa
GPM	[3.9]	[1309]	[2689]	[4033]	[5421]	[6739]	[7774]	[8649]	
	15	148	304	456	613	762	879	978	
L/min	[7.9]	48	47	45	43	41	39	27	
	30	[1371]	[2777]	[4112]	[5616]	[6881]	[7818]	[8738]	TORQUE (LB-IN)
Flow (L/min)	[7.9]	155	314	465	635	778	884	988	TORQUE (N•M)
	30	95	93	91	89	86	82	67	SPEED (RPM)
Flow (L/min)	[10.6]	[1415]	[2839]	[4236]	[5749]	[7040]	[8013]	[8817]	
	40	160	321	479	650	796	906	997	
Flow (L/min)	[10.6]	127	125	121	117	115	109	91	
	40	[1371]	[2777]	[4112]	[5642]	[6898]	[7836]	[8738]	
Flow (L/min)	[13.2]	155	314	465	638	780	886	988	
	50	159	157	153	149	145	142	128	
Flow (L/min)	[15.9]	[1535]	[2706]	[4006]	[5483]	[6766]	[7836]	[8632]	
	60	151	306	453	620	765	886	976	
Max cont.	[15.9]	187	185	181	176	169	157	143	
	60	[1291]	[2653]	[3936]	[5421]	[6677]	[7739]	[8543]	Max cont.
Max cont.	[19.8]	146	300	445	613	755	875	966	
	75	238	236	232	227	224	220	196	
Max int.	[19.8]	Max cont.							
	75	[1194]	[2512]	[3856]	[5315]	[6545]	[7632]	[8419]	Max int.
Max int.	[23.8]	135	284	436	601	740	863	952	
	90	286	283	278	272	265	257	232	

YMSY 400 [24.0 in³/rev] 394 cm³/rev.

		[508]	[1015]	[1523]	[2030]	[2320]	[2538]	[PSI]
		3.5	7	10.5	14	16	17.5	MPa
GPM	[3.9]	[1645]	[3352]	[5112]	[6889]	[7924]	[8720]	
	15	186	379	578	779	896	986	
L/min	[7.9]	37	36	35	33	31	29	
	30	[1680]	[3431]	[5218]	[6996]	[8004]	[8764]	TORQUE (LB-IN)
Flow (L/min)	[7.9]	190	388	590	791	905	991	TORQUE (N•M)
	30	75	73	71	68	65	61	SPEED (RPM)
Flow (L/min)	[10.6]	[1725]	[3485]	[5271]	[7049]	[8066]	[8826]	
	40	195	394	596	797	912	998	
Flow (L/min)	[10.6]	99	97	95	93	90	85	
	40	[1689]	[3431]	[5191]	[6943]	[7995]	[8694]	
Flow (L/min)	[13.2]	191	388	587	785	904	983	
	50	125	123	118	114	109	102	
Flow (L/min)	[15.9]	[1645]	[3431]	[5191]	[6943]	[7995]	[8694]	
	60	186	388	587	785	904	983	
Max cont.	[15.9]	149	146	142	137	131	122	
	60	[1601]	[3290]	[5094]	[6810]	[7880]	[8605]	Max cont.
Max cont.	[19.8]	181	372	576	770	891	973	
	75	187	183	177	171	164	153	
Max int.	[19.8]	Max cont.						
	75	[1557]	[3246]	[5050]	[6775]	[7809]	[8534]	Max int.
Max int.	[23.8]	176	367	571	766	883	965	
	90	226	221	214	208	199	183	

YMSY

PERFORMANCE DATA

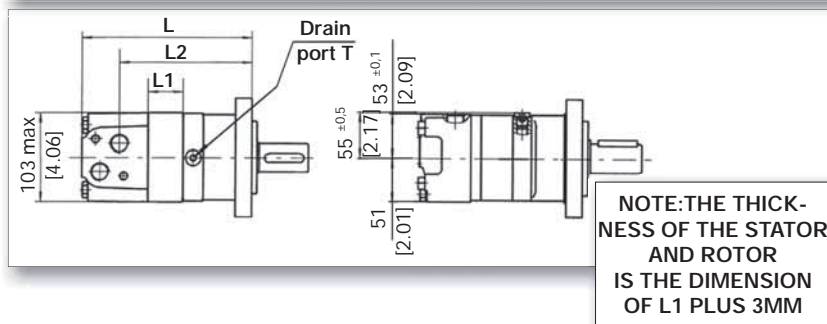
YMSY 475 [28.9 in³/rev] 475 cm³/rev. Max cont. Max int.

	[508]	[1015]	[1523]	[2030]	[2538]	[PSI]
	3.5	7	10.5	14	17.5	MPa
GPM	[3.9]	[1928]	[3883]	[5843]	[7889]	[8800]
L/min	15	218	439	661	892	995
	[7.9]	[1972]	[3980]	[5979]	[8048]	[8862]
	30	223	450	676	910	1002
		61	60	58	56	53
	[10.6]	[2016]	[4077]	[6094]	[8198]	[8994]
	40	228	461	689	927	1017
	[13.2]	[1981]	[4033]	[6032]	[8136]	[8915]
	50	224	456	682	920	1008
		103	101	97	92	86
	[15.9]	[1946]	[3989]	[5987]	[8075]	[8826]
	60	220	451	677	913	998
		123	121	118	112	105
	[19.8]	[1875]	[3918]	[5872]	[7968]	[8667]
	75	212	443	664	901	980
		155	153	147	140	132
	[23.8]	[1733]	[3723]	[5687]	[7756]	[8481]
	90	196	421	643	877	959
		186	184	178	170	157

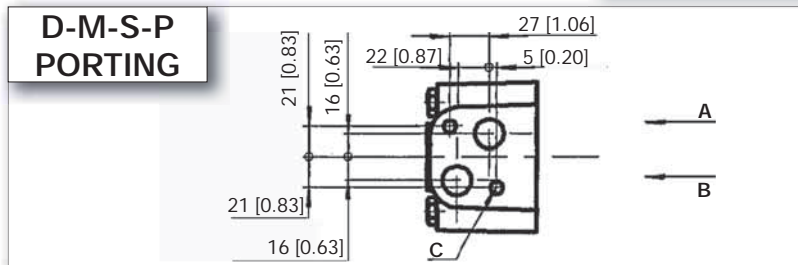
TORQUE [LB-IN]
TORQUE (N•M)
SPEED (RPM)

Max cont.
Max int.

MOUNTING DATA



MODEL	[INCHES]			MILLIMETERS		
	L	L1	L2	L	L1	L2
YMSY 80	[6.69]	[0.63]	[4.98]	170	16	126.5
YMSY 100	[6.85]	[0.79]	[5.14]	174	20	130.5
YMSY 125	[7.05]	[0.98]	[5.33]	179	25	135.5
YMSY 160	[7.15]	[1.09]	[5.43]	181.5	27.5	137.7
YMSY 200	[7.44]	[1.39]	[5.72]	189	35.1	145.2
YMSY 250	[7.92]	[1.85]	[6.19]	201	47	157.2
YMSY 315	[8.39]	[2.33]	[6.67]	213	59	169.2
YMSY 400	[25.4]	[2.72]	[7.07]	223	69	179.5
YMSY 475	[9.33]	[3.27]	[7.22]	237	83	183.5



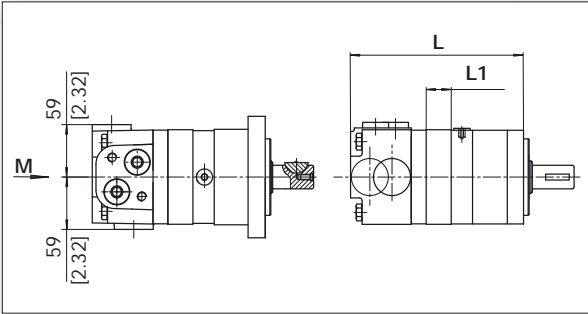
MODEL	[INCHES]			MILLIMETERS		
	L	L1	L2	L	L1	L2
YMSY 80 W	[5.22]	[0.63]	[3.50]	132.5	16	89
YMSY 100 W	[5.37]	[0.79]	[3.66]	136.5	20	93
YMSY 125 W	[5.57]	[0.98]	[3.86]	141.5	25	98
YMSY 160 W	[5.67]	[1.08]	[3.96]	143.9	27.5	100.5
YMSY 200 W	[5.96]	[1.38]	[4.25]	151.4	35.1	108
YMSY 250 W	[6.43]	[1.85]	[4.72]	163.4	47	120
YMSY 315 W	[6.91]	[2.32]	[5.20]	175.4	59	132
YMSY 400 W	[7.30]	[2.72]	[5.59]	185.5	69	142
YMSY 475 W	[7.85]	[3.27]	[6.14]	199.5	83	156

PORT & DRAIN PORT ORDERING CODES

ORDER CODE	D depth	M depth	S depth	P depth
PORTS - A AND B	G 1/2 18 mm	M 22 x 1.5 18 mm	7/8-14 O-ring 18 mm	1/2-14 NPT 15 mm
TANK PORT - T	G 1/4 12 mm	M 14 x 1.5 12 mm	7/16-20UNF 12 mm	7/16-20 UNF 12 mm
BOLTS-C	2-M10 13 mm	2-M10 13 mm	2-3/8-16 unc 13 mm	2-3/8-16 unc 13 mm

YMSY

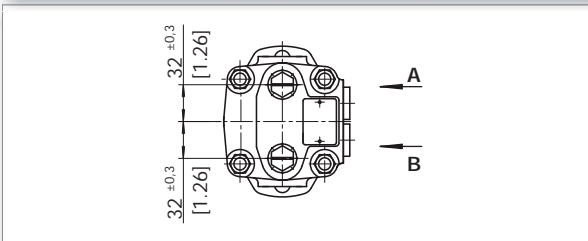
MOUNTING DATA



MODEL	[INCHES]		MILLIMETERS	
	L	L1	L	L1
YMSY 80	[6.93]	[0.63]	176	16
YMSY 100	[7.09]	[0.79]	180	20
YMSY 125	[7.28]	[0.98]	185	25
YMSY 160	[7.36]	[1.06]	187	27
YMSY 200	[7.64]	[1.34]	194	34
YMSY 250	[7.95]	[1.65]	202	42
YMSY 315	[8.43]	[2.13]	214	54
YMSY 400	[9.02]	[2.72]	229	69
YMSY 475	[9.57]	[3.27]	243	83

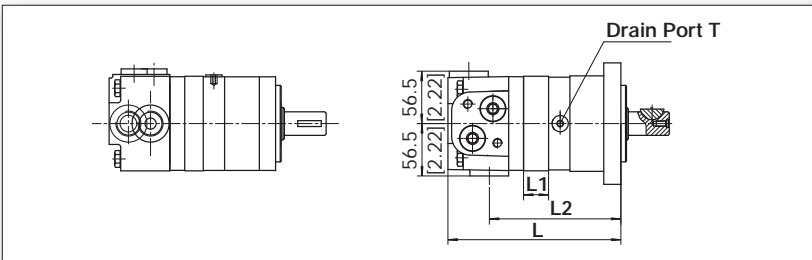
MODEL	[INCHES]		MILLIMETERS	
	L	L1	L	L1
YMSY 80 WE	[5.83]	[0.63]	148	16
YMSY 100 WE	[5.98]	[0.79]	152	20
YMSY 125 WE	[6.18]	[0.98]	157	25
YMSY 160 WE	[6.26]	[1.06]	159	27
YMSY 200 WE	[6.54]	[1.34]	166	34
YMSY 250 WE	[6.85]	[1.65]	174	42
YMSY 315 WE	[7.32]	[2.13]	186	54
YMSY 400 WE	[7.91]	[2.72]	201	69
YMSY 475 WE	[8.46]	[3.27]	215	83

PORTING END PORTS



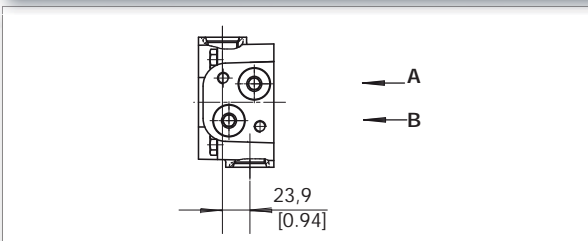
PORT & DRAIN PORT ORDERING CODES

ORDER CODE	EE-D depth	EE-M2 depth	EE-S2 depth
PORTS - A AND B	G 1/2 18 mm	M22x1.5 - 18 mm	7/8-14 O-ring 18 mm
TANK PORT - T	G 1/4 12 mm	M14x1.5 - 12 mm	7/16-20 UNF 12 mm



MODEL	[INCHES]			MILLIMETERS		
	L	L1	L2	L	L1	L2
YMSY 80	[6.93]	[0.63]	[5.12]	176	16	130
YMSY 100	[7.09]	[0.79]	[5.28]	180	20	134
YMSY 125	[7.28]	[0.98]	[5.47]	185	25	139
YMSY 160	[7.36]	[1.06]	[5.55]	187	27	141
YMSY 200	[7.64]	[1.34]	[5.83]	194	34	148
YMSY 250	[7.95]	[1.65]	[6.14]	202	42	156
YMSY 315	[8.43]	[2.13]	[6.61]	214	54	168
YMSY 400	[9.02]	[2.72]	[7.20]	229	69	183
YMSY 475	[9.57]	[3.27]	[7.76]	243	83	197

ED PORTING 180° PORTS

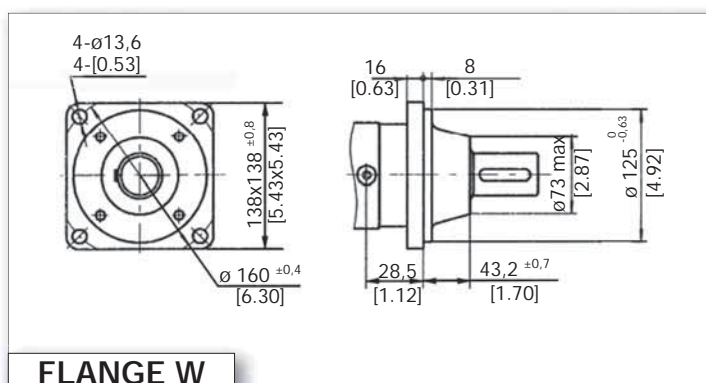
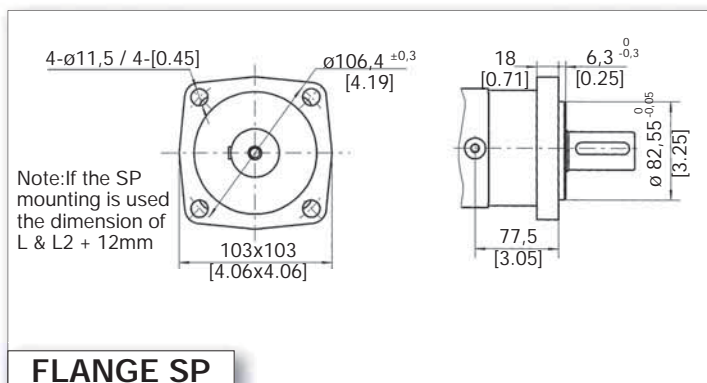
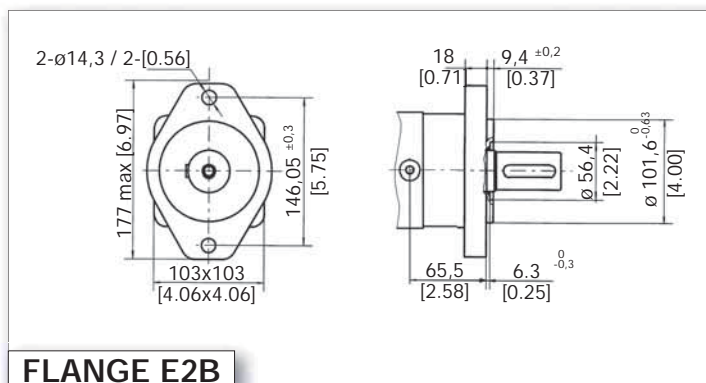
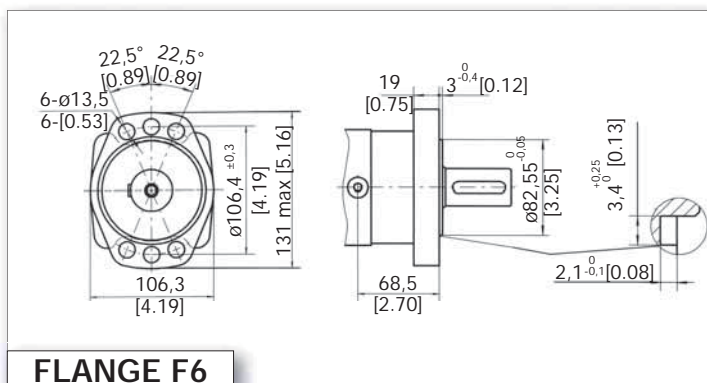
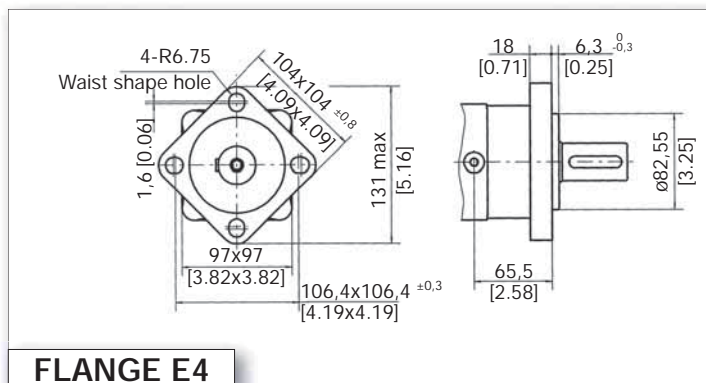
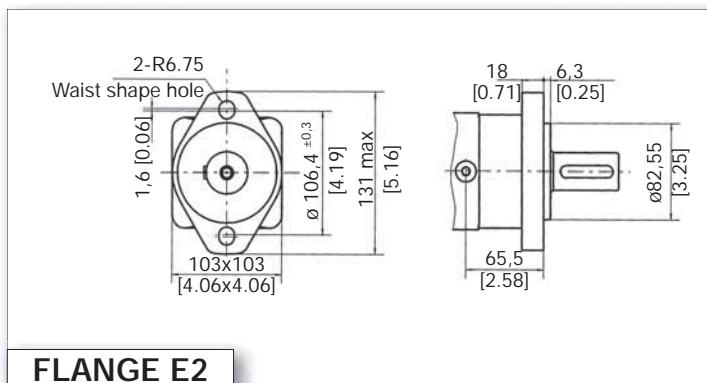


PORT & DRAIN PORT ORDERING CODES

ORDER CODE	ED depth
PORTS - A AND B	1-1/16-12 UN O-ring 18 mm
T	7/16-20 UNF 12 mm

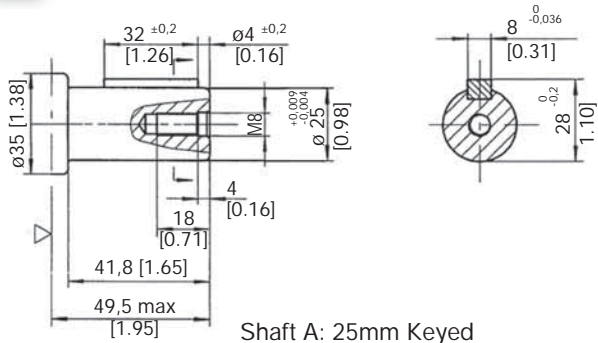
MODEL	[INCHES]			MILLIMETERS		
	L	L1	L2	L	L1	L2
YMSY 80	[5.83]	[0.63]	[4.02]	148	16	102
YMSY 100	[5.98]	[0.79]	[4.17]	152	20	106
YMSY 125	[6.18]	[0.98]	[4.37]	157	25	111
YMSY 160	[6.26]	[1.06]	[4.45]	159	27	113
YMSY 200	[6.54]	[1.34]	[4.69]	166	34	119
YMSY 250	[7.01]	[1.65]	[5.00]	178	42	127
YMSY 315	[7.48]	[2.13]	[5.47]	190	54	139
YMSY 400	[8.07]	[2.72]	[6.06]	205	69	154
YMSY 475	[8.62]	[3.27]	[6.61]	219	83	168

MOUNTING DATA



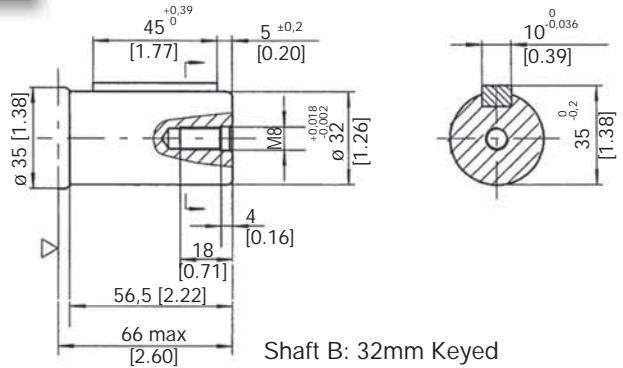
MOTOR SHAFT EXTENSIONS

A



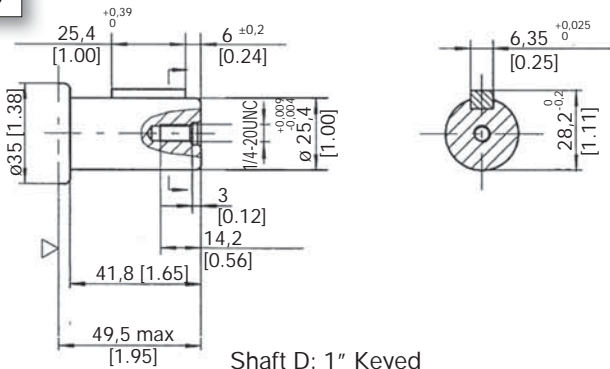
Shaft A: 25mm Keyed
Parallel key 8x7x32

B



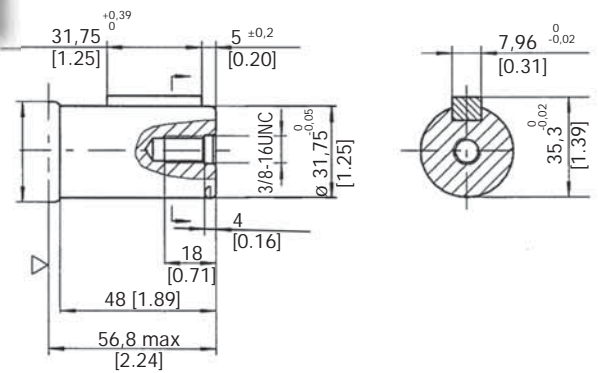
Shaft B: 32mm Keyed
Parallel key 10x8x45

D



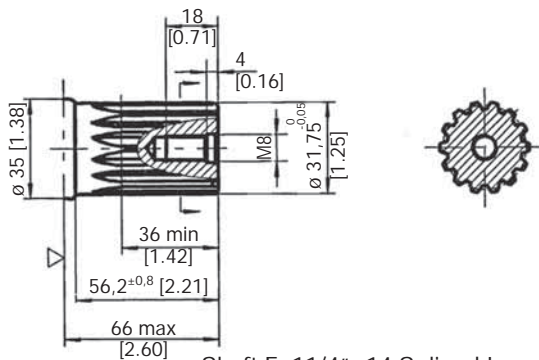
Shaft D: 1" Keyed
Parallel key .25x.25x1.0

G



Shaft G: 1 1/4" Keyed
Parallel key .31x.31x1.25

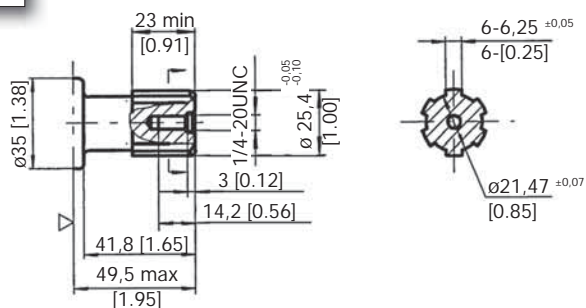
FD



Shaft F: 1 1/4" -14 Splined Long
14-DP12/24

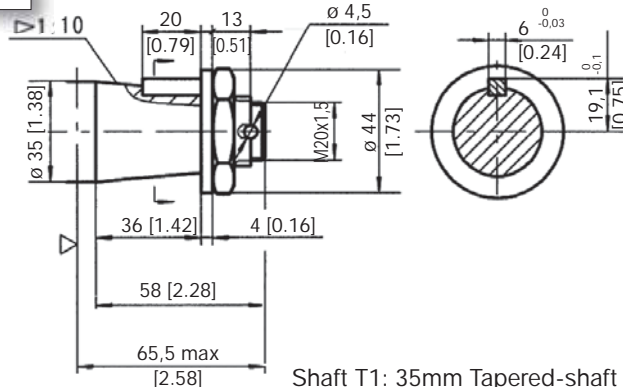
MOTOR SHAFT EXTENSIONS

S1



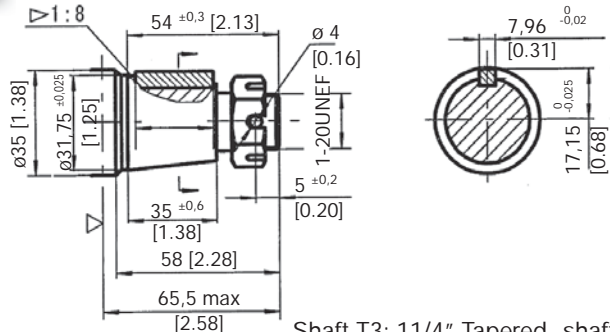
Shaft S1: Splined SAE 6B

T1



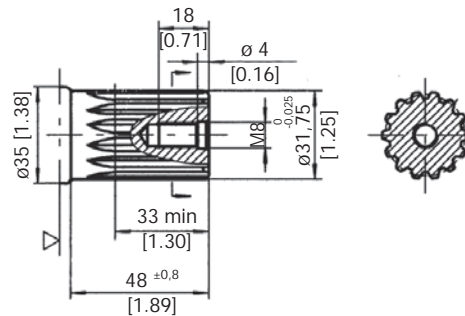
Shaft T1: 35mm Tapered-shaft
Parallel key B6x6x20

T3



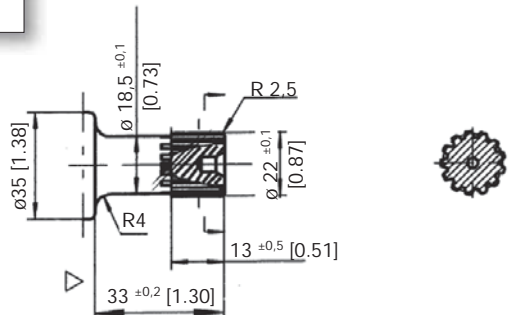
Shaft T3: 11/4" Tapered -shaft
Parallel key .31x.31x11/4
Tightening torque:200±10Nm

F



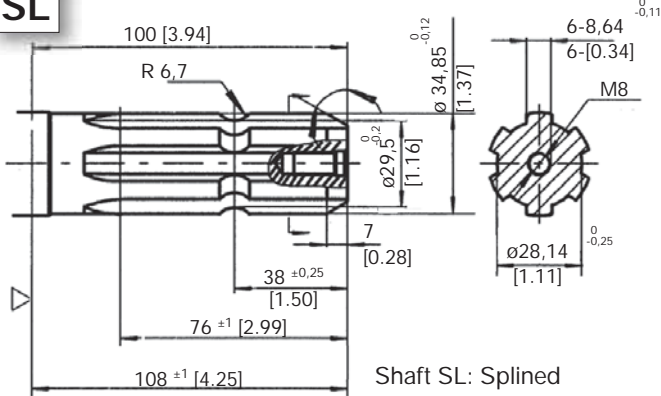
Shaft F : 11/4" 14 Splined Take out
14-DP12/24

I



Shaft I: 7/8" 13 Splined
13-DP16/32

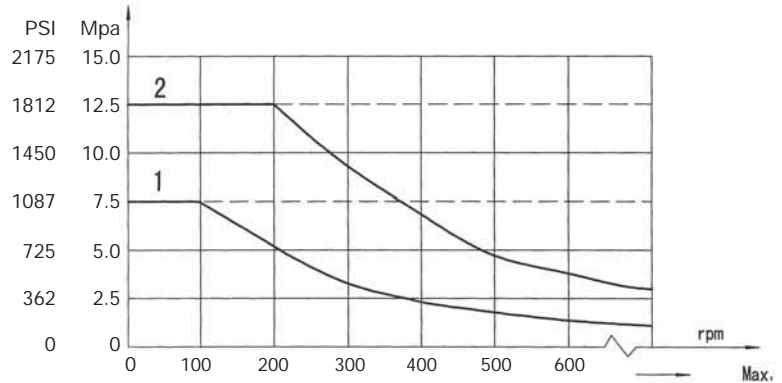
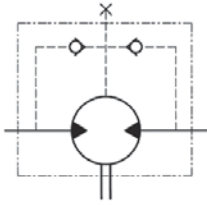
SL



Shaft SL: Splined
6-34.85x28.14x8.64

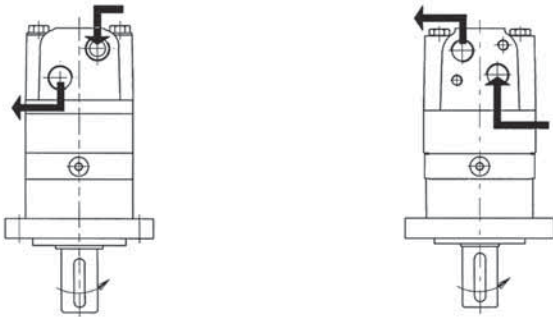
ADDITIONAL DATA

PERMISSIBLE SHAFT SEAL PRESSURE



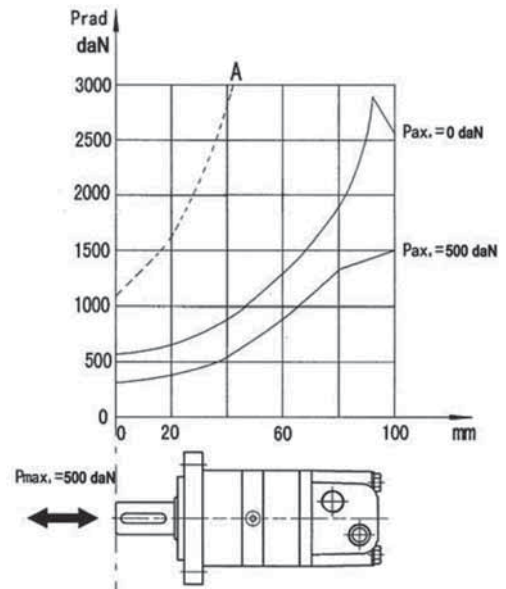
IN APPLICATIONS WITHOUT A DRAIN LINE, THE PRESSURE EXERTED ON THE SHAFT SEAL WILL EXCEED THE PRESSURE IN THE RETURN LINE. IN APPLICATIONS USING A DRAIN LINE, THE PRESSURE ON THE OUTPUT SHAFT SEAL CAN EQUAL THE PRESSURE IN DRAIN LINE.

DIRECTION OF SHAFT ROTATION



WHEN FACING SHAFT END OF MOTOR, SHAFT TO ROTATE: CLOCKWISE WHEN PORT "A" IS PRESSURIZED. COUNTER CLOCK WISE WHEN PORT "B" IS PRESSURIZED.

AXIAL AND RADIAL FORCES



The output shaft runs in tapered bearings that permit high axial and radial forces, Curve "A" shows max radial shaft load, Any shaft loads exceeding the values quoted in the curve will involve a risk of breakage, The two other curves apply to a B10 bearing life of 3000 hours at 200 RPM

ORDERING INFORMATION

	1	2	3	4	5	6	7
YMSY							

1	2		3		4		5		6		7	
DISP.	FLANGE		OUTPUT SHAFT		PORT AND DRAIN PORT		ROTATION DIRECTION		PAINT		SPECIAL OPTIONS	
80	E2	SAE 2-Bolt , pilot 3.25x.25	A	Shaft :25mm Keyed, parallel Key 8×7×32	D	G1/2 Manifold Mount 2-M10, G1/4	NONE	STANDARD	OO	NO PAINT	NONE	STANDARD
100	E4	4- Bolt flange, pilot 3.25x.25	B	Shaft: 32mm Keyed parallel Key 10×8×45	M	M22×1.5 Manifold Mount 2-M10, M14×1.5	R	OPPOSITE	NONE	BLUE	FR	FREE RUNNING
125	F6	Magneto flange, pilot 3.25x.25	D	Shaft: 1" Keyed parallel Key .25x.25x1.0	S	7/8-14 O-ring manifold 2-3/8-16 UNC, 7/16-20UNF			B	BLACK	LL	LOW LEAKAGE
160	SP	4 Bolt-flange, pilot 3.25x.25	G	Shaft: 11/4" Keyed parallel Key .31x.31x1.25	P	1/2-14 NPTF Manifold 2-3/8-16 UNC, 7/16-20UNF			S	SILVER GRAY	LSV	LOW SPEED VALVE
200	W	4-Ø13.5 Wheel-flange, pilot Ø125×8	F	Shaft: 11/4-14,splined 14-DP12/24	EE M2	M22X1,5 M14X1,5					CRS	CORROSION RESISTANT SHAFT
250	E2B	SAE B 2-Bolt pilot 4.00x.37	FD	Long Shaft: 11/4-14 splined splined14-DP12/24	EE S2	7/8-14 UNF O-RING 7/16-20 UNF					HPS	HIGH PRESSURE SEAL
315			SL	Shaft Ø34.85 ,Splined 6-34.85×28.14×8.64	ED	1-1/16-12 UF O-RING, 7/16-20 UNF					HTS	HIGH TEMP SEAL
400			T1	35mm Tapered parallel key b6x6x20								
475			T3	shaft: 11/4 Tape-red parallel Key .31x.31x1.250								
			S1	Shaft :SAE-6 B splined								
			I	Shaft: 7/8-13 splined 13-DP16/32								

Ordering code:

All options have been determined with letters, numbers or combinations. All boxes must be filled with proper codes. If specification is not in the table , please contact us with your specific requirements.

PowerTech Hydraulic Motors from

CYLINDER SERVICES inc
Rochester, NY
585-328-0670

CylinderServices.net

